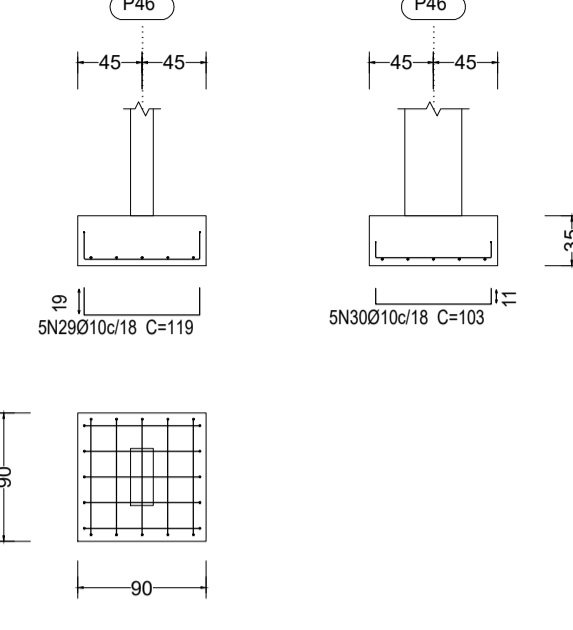
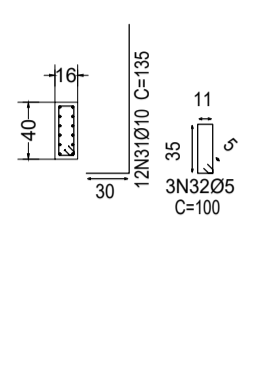


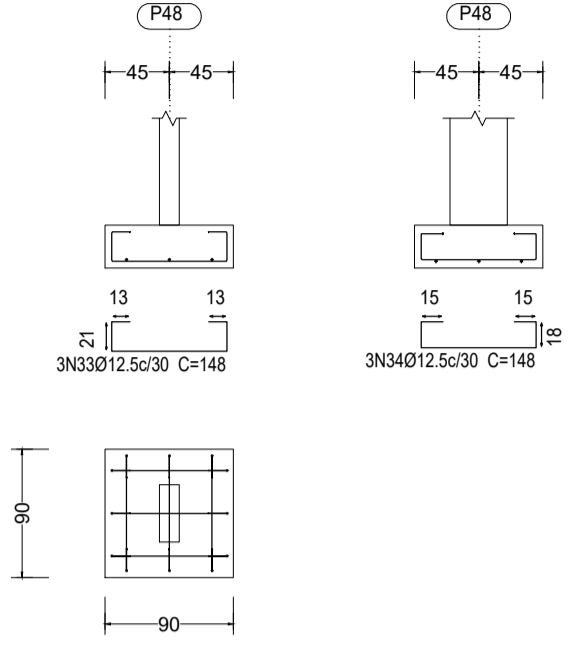
P46



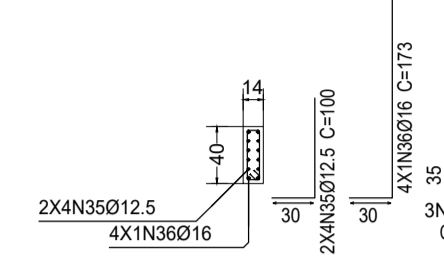
P46



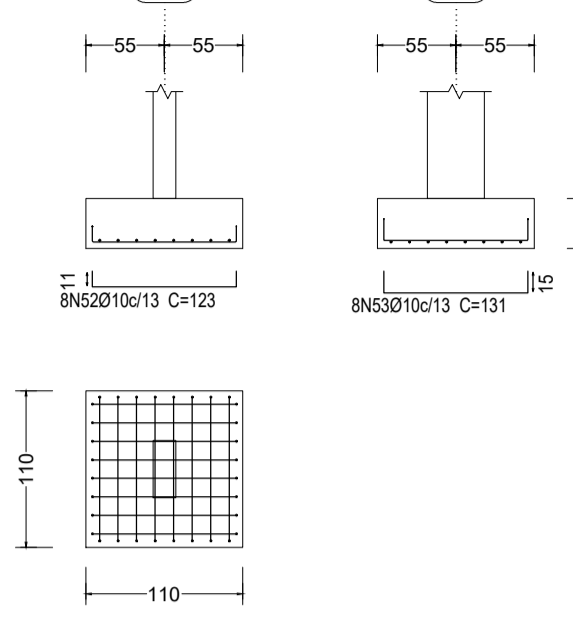
P48



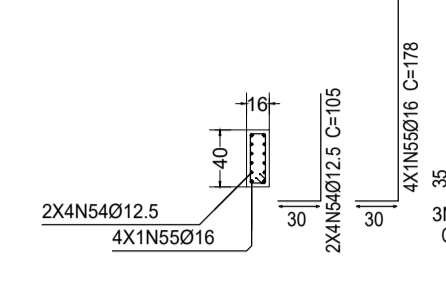
P48



P53

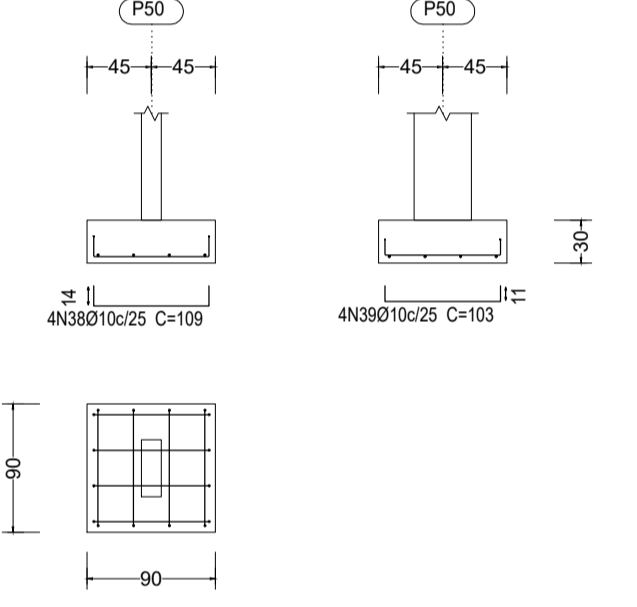


P53

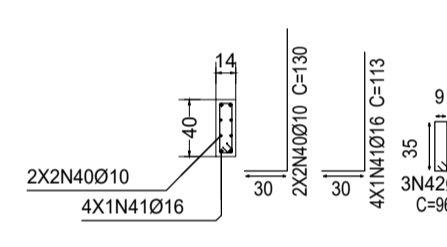


Resumo Aço Fundação			
Detalhamento fundação	Comp. total (m)	Peso (kg)	Total
CA-50 Ø6.3	3.1	1	
Ø10	1477.7	911	
Ø12.5	482.8	465	
Ø16	185.5	293	
Ø20	16.0	39	1709
CA-60 Ø5	301.6	47	47
Total			1756

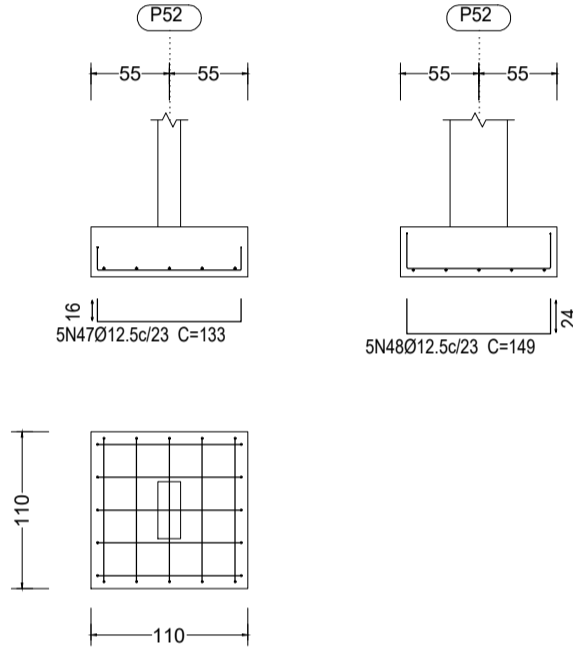
P50



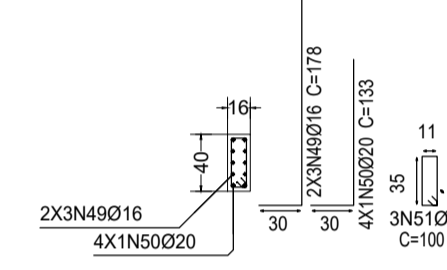
P50



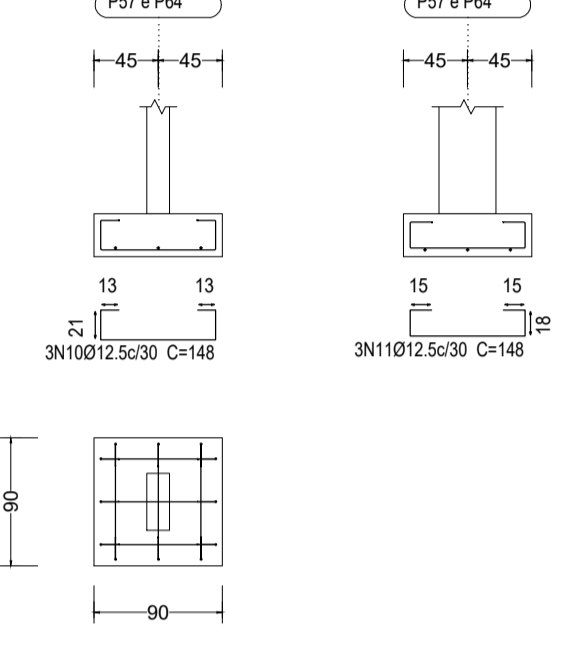
P52



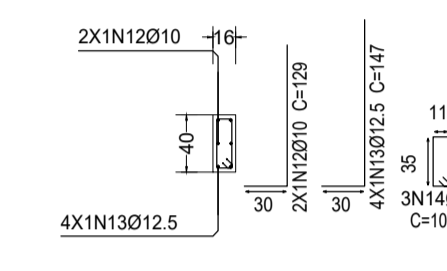
P52



P57 e P64

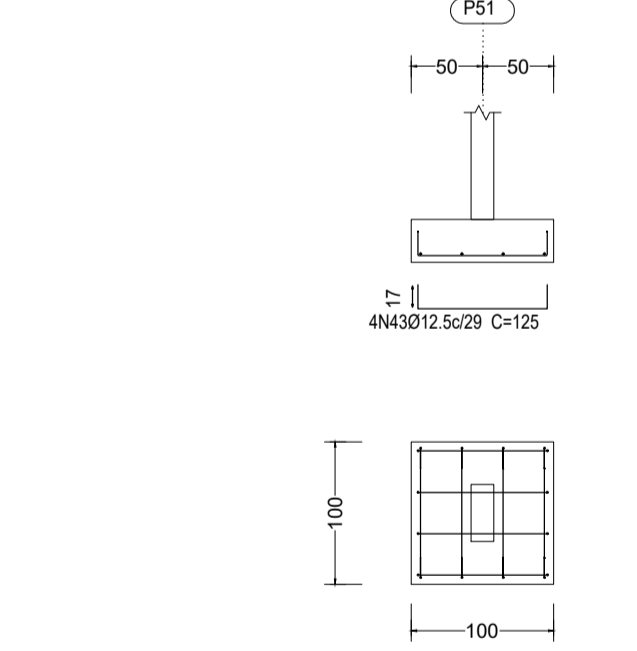


P57 e P64

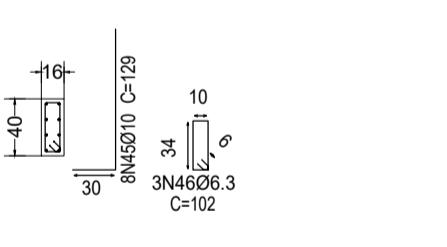


Elemento	Pos.	Diam.	Q.	Dob. (cm)	Reta (cm)	Dob. (cm)	Comp. (cm)	Total (cm)	CA-50 (kg)	CA-60 (kg)	Elemento	Pos.	Diam.	Q.	Dob. (cm)	Reta (cm)	Dob. (cm)	Comp. (cm)	Total (cm)	CA-50 (kg)	CA-60 (kg)		
P54	1	Ø12.5	4	17	91	17	125	500	4.8		P46	29	Ø10	5	19	81	19	119	595	3.7			
	2	Ø12.5	4	14	130	14	158	632	6.1			30	Ø10	5	11	81	11	103	515	3.2			
	3	Ø12.5	6	30	117		147	882	8.5			31	Ø10	12	30	105		135	1620	10.0			
	4	Ø5	3		100		100	300		0.5		32	Ø5	3		100		100	300		0.5		
									Total:	19.4	0.5										Total:	16.9	0.5
P55	5	Ø10	6	11	111	11	133	798	4.9		P48	33	Ø12.5	3	13	122	13	148	444	4.3			
	6	Ø10	6	11	111	11	133	798	4.9			34	Ø12.5	3	15	118	15	148	444	4.3			
	7	Ø12.5	6	30	75		105	630	6.1			35	Ø12.5	8	30	70		100	800	7.7			
	8	Ø16	4	30	148		178	712	11.2			36	Ø16	4	30	143		173	692	10.9			
	9	Ø5	3		160		160	480		0.8		37	Ø5	3		96		96	288		0.5		
									Total:	27.1	0.8										Total:	27.2	0.5
P57=P64	10	Ø12.5	3	13	122	13	148	444	4.3		P50	38	Ø10	4	14	81	14	109	436	2.7			
	11	Ø12.5	3	15	118	15	148	444	4.3			39	Ø10	4	11	81	11	103	412	2.5			
	12	Ø10	2	30	99		129	258	1.6			40	Ø10	4	30	100		130	520	3.2			
	13	Ø12.5	4	30	117		147	588	5.7			41	Ø16	4	30	83		113	452	7.1			
	14	Ø5	3		100		100	300		0.5		42	Ø5	3		96		96	288		0.5		
									Total:	15.9	0.5										Total:	15.5	0.5
									(x2):	31.8	1.0												
P58	15	Ø10	5	15	81	15	111	555	3.4		P51	43	Ø12.5	4	17	91	17	125	500	4.8			
	16	Ø10	5	11	121	11	143	715	4.4			44	Ø12.5	4	14	130	14	158	632	6.1			
	17	Ø10	6	30	62		92	552	3.4			45	Ø10	8	30	99		129	1032	6.4			
	18	Ø5	3		100		100	300		0.5		46	Ø6.3	3		102		102	306	0.7			
									Total:	11.2	0.5										Total:	18.0	
P59	19	Ø10	4	13	80	13	106	424	2.6		P52	47	Ø12.5	5	16	101	16	133	665	6.4			
	20	Ø10	4	14	81	14	109	436	2.7			48	Ø12.5	5	24	101	24	149	745	7.2			
	21	Ø10	8	30	62		92	736	4.5			49	Ø16	6	30	148		178	1068	16.9			
	22	Ø16	4	30	83		113	452	7.1			50	Ø20	4	30	103		133	532	13.1			
	23	Ø5	3		96		96	288		0.5		51	Ø5	3		100		100	300		0.5		
									Total:	16.9	0.5										Total:	43.6	0.5
P60	24	Ø12.5	3	13	122	13	148	444	4.3		P53	52	Ø10	8	11	101	11	123	984	6.1			
	25	Ø12.5	3	15	118	15	148	444	4.3			53	Ø10	8	15	101	15	131	1048	6.5			
	26	Ø10	8	30	99		129	1032	6.4			54	Ø12.5	8	30	75		105	840	8.1			
	27	Ø16	4	30	143		173	692	10.9			55	Ø16	4	30	148		178	712	11.2			
	28	Ø5	3		96		96	288		0.5		56	Ø5	3		100		100	300		0.5		
									Total:	25.9	0.5										Total:	31.9	0.5
																					Ø5:	0.0	6.3
																					Ø6.3:	0.7	0.0
																					Ø10:	84.7	0.0
																					Ø12.5:	111.6	0.0
																					Ø16:	75.3	0.0
																					Ø20:	13.1	0.0
																					Total:	285.4	6.3

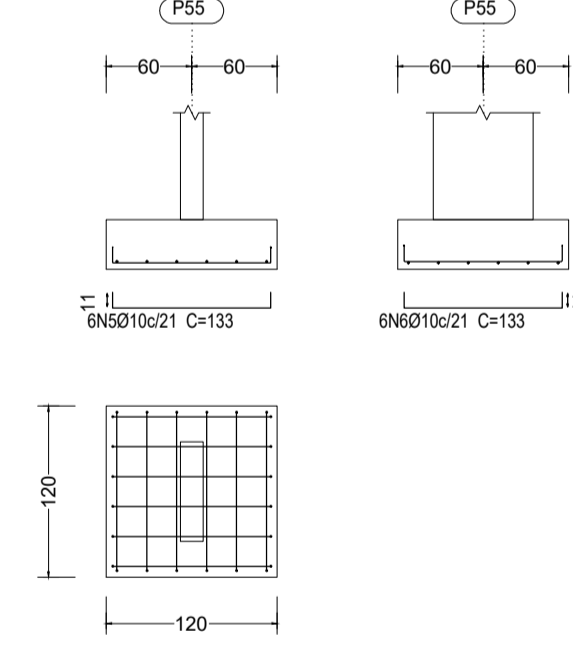
P51



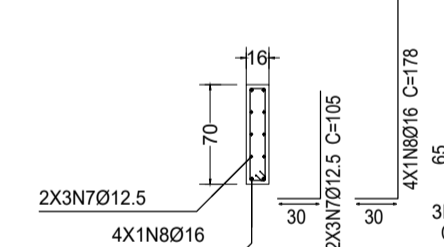
P51



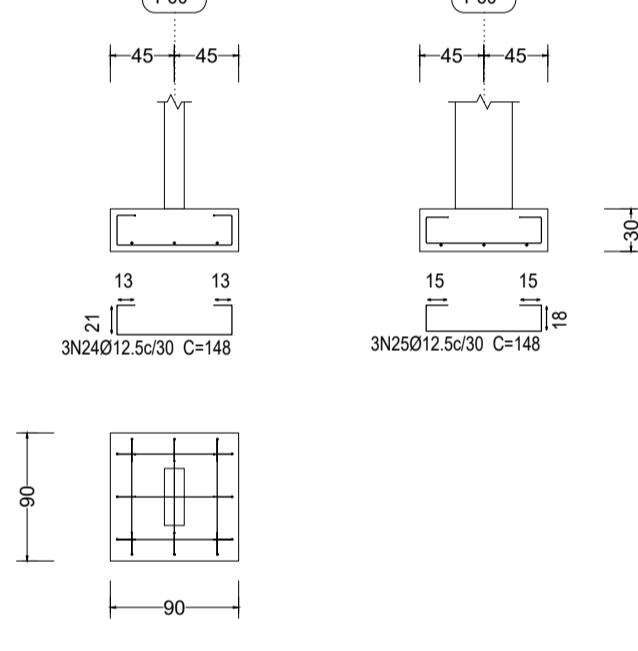
P55



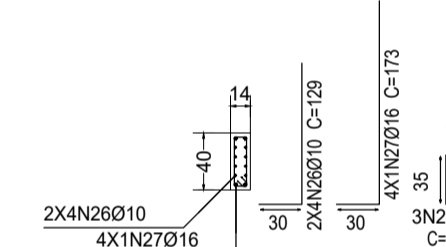
P55



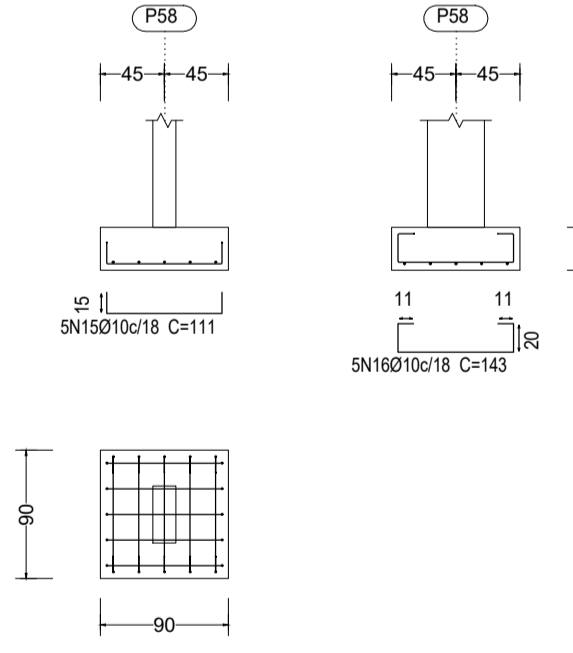
P60



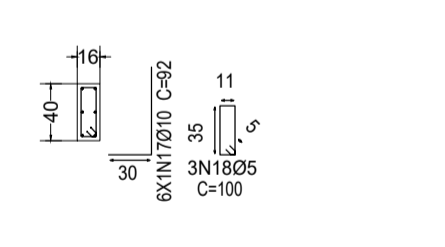
P60



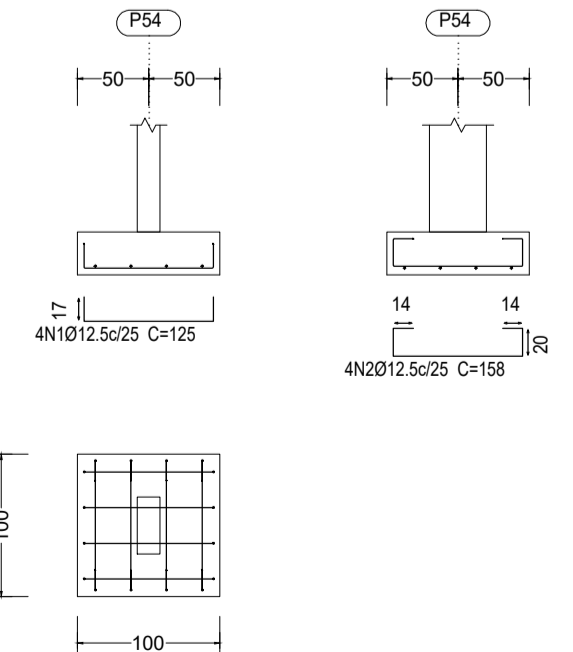
P58



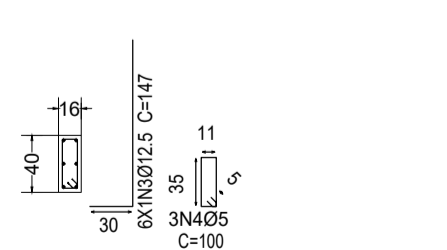
P58



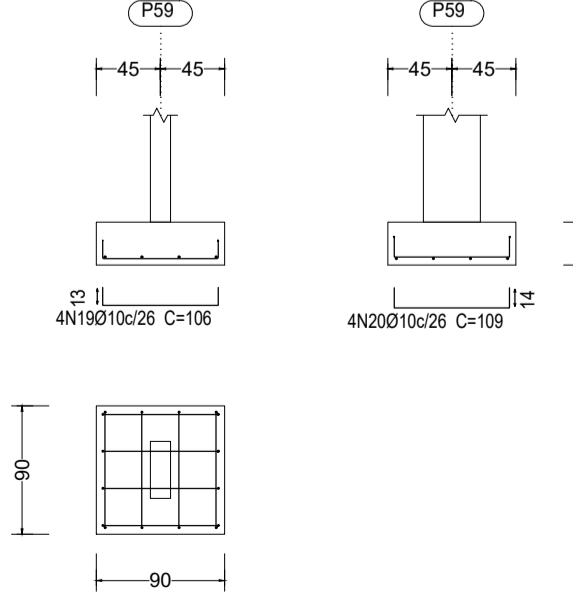
P54



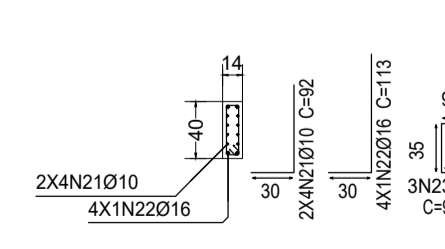
P54



P59



P59



FUNDAÇÕES

ARCOVERDE - PE

ENDEREÇO: RUA EDILIO SIMÕES DA ROCHA, 53-85 - SÃO MIGUEL

PROPRIETÁRIO: SEÇÃO JUDICIÁRIA DE PERNAMBUCO

Autor do Projeto: Engº Civil Lúcio Castello Branco - CREA Nº 1.768 D/P1

Resp. Técnico:

Proprietário: _____

Autor do Projeto: _____ CREA Nº 1.768 D/P1

R.T. CREA Nº _____

CREA

FUNDAÇÕES EM SAPATAS		
FRANCHA	EDIFÍCIO DE USO PÚBLICO - JUSTIÇA FEDERAL	TIPO
04/06	SAPATAS: DIMENSÕES E ARMADURAS	ESTR.
Data: Outubro/2022	Desenho: Lúcio	Escala: Indefinida